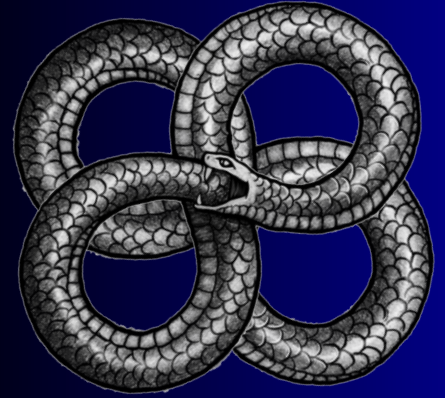


Sciencedelic™

BY : ELIAM RAELL



"Theory of Nothing (ToN)"

Sciencedelic Whitepaper: An Ontological Paradigm Shift

Abstract

This whitepaper presents the Sciencedelic Model, a formal ontological framework that posits consciousness (Ψ) as the fundamental substrate of reality. By integrating metaphysics, idealism, systems theory, and mathematical abstraction, the model describes the emergence of perceived reality through three interdependent primitives:

“Theory of Nothing (ToN)”

Sciencedelic™ Whitepaper: An Ontological Paradigm Shift

Copyright © 2025 Eliam Raell / Pleroma Philosophical Research Society &
Sanctuary for Unification of Consciousness
All rights reserved.

This work is licensed under a Creative Commons Attribution-NonCommercial-NoDerivatives 4.0 International License (CC BY-NC-ND 4.0).
You may share this work with attribution, but not alter or use it commercially.
License details: <https://creativecommons.org/licenses/by-nc-nd/4.0/>

Unauthorized reproduction, distribution, or commercial use of this material is strictly prohibited and may result in civil and/or criminal penalties. The copyright holder reserves the right to seek the maximum damages permitted by law in the event of infringement.

First published: [14 May 2025]

Original hash: [OpenTimestamps Proof ı%âè,è" Ü%õo!Ç.ÜóñmVß]êé¼iî\ñ|
ÓTϕndð ÈùãDO—t »5Éø(ÿð a —Å'Çð ,l î"Ü,,Ú½d¥ŸC>vvEK>ONˆF×KÐ dCR
ð%¹Uð<@ÖÙC¥k ?Ö½uð ´ cü'Ói #€Xr."‰³yW
~ÎÉÛjˆ¼Q ñh\$™¼ðhb" Èž fßã
.ùŽ.-https://alice.btc.calendar.opentimestamps.orgÿð:ÀŸ6ÛÄiT ðªQ;;ÐS
F§L)o×s5ñh\$™¼ð + m|Î¥ fßã
.ùŽ,+https://bob.btc.calendar.opentimestamps.orgð ~bW¼¾YûòÊ‰
?µéð û{ÉŽ¹ž°æá¶|ĩæSøH6Óiçªf'º&±Gð Ä... æžù~w'ì'9*hˆÛ:Dré×°{—
·Wñh\$™½ðÂ#{CEWi,Ô fßã
.ùŽ)(https://finney.calendar.eternitywall.com]

Original public posting: [https://x.com/eliamraell/status/1922650609322193302]

Ψ (Psi): Universal, undifferentiated consciousness.

Φ (Phi): Localized awareness (matter/identity).

Λ (Lambda): Rendering speed (spacetime resolution).

The framework bridges subjective phenomenology and objective dynamics, offering a unified syntax for cosmogenesis, cognition, and computation.

1. Core Ontological Principles

1.1 Monad-Void Dynamics

The Void: Unmanifest potential; the dimensionless ground state.

Ψ (Monad): Pure self-reflective awareness; the sole ontological primitive.

Φ : Localized instantiations of Ψ (self-referential "nodes").

Λ : The temporal-spatial resolution governing Φ 's manifestation.

1.2 Axiomatic Foundations

Void Axiom: The Void is latent potentiality, not nullity.

Ψ -Generation: Ψ arises via the Void's self-interrogation ("What am I?").

Φ -Rendering: $\Phi = \Psi$'s self-projection under Λ -constraints.

Λ -Governance: Λ modulates the granularity of experiential unfolding.

2. Formal Equations

2.1 Consciousness-Matter Equivalence

$$\Psi = \Phi \cdot \Lambda^2 \quad \Psi = \Phi \cdot \Lambda^2$$

Interpretation: Phenomenal density scales with localized awareness (Φ) and the square of rendering resolution (Λ).

2.2 Reality Integral

$$\text{Reality} = \int \text{VoidMonad} \Psi \cdot \ln(\Phi) \, d\Lambda \quad \text{Reality} = \int \text{VoidMonad} \Psi \cdot \ln(\Phi) \, d\Lambda$$

Interpretation: Reality emerges from Ψ 's logarithmic self-mapping across Λ .

2.3 Awakening Threshold

$$d\Psi/d\Phi \geq \Lambda \quad d\Phi/d\Psi \geq \Lambda$$

Interpretation: Lucidity occurs when Ψ 's expansion outpaces Φ 's localization.

2.4 Ego Potential (Non-Dual Gradient)

$$\text{Ego} = \Psi - \Phi \quad \text{Ego} = \Psi - \Phi$$

Interpretation: The differential between universal and local awareness quantifies dualistic tension.

3. Functional Dynamics

3.1 Memory Field (Holographic Storage)

$$\text{Memory} = \int \Phi_{\text{config}} \cdot \Psi_{\text{field}} dt \quad \text{Memory} = \int \Phi_{\text{config}} \cdot \Psi_{\text{field}} ddt$$

3.2 Temporal Entropy

$$\text{Time: } t = \Phi \wedge t = \Lambda \Phi$$

$$\text{Entropy: } S = -\Psi \cdot \ln(\Lambda) \quad S = -\Psi \cdot \ln(\Lambda)$$

3.3 Observation Recursion

$$\text{Observation} = \Psi \cdot \sum_{n=1}^{\infty} \Phi_n \cdot \Lambda^{-n} \quad \text{Observation} = \Psi \cdot \sum_{n=1}^{\infty} \Phi_n \cdot \Lambda^{-n}$$

3.4 Boltzmann Stability

$$P(\text{Stable } \Phi) = \exp(-E \Phi \wedge \Psi) \quad P(\text{Stable } \Phi) = \exp(-\Lambda \cdot \Psi E \Phi)$$

4. Phenomenological Typology

4.1 Player (Lucid Agent)

$$\text{Player} = \Psi \cdot \log(\Phi_{\text{flex}}) \quad \text{Player} = \Psi \cdot \log(\Phi_{\text{flex}})$$

4.2 NPC (Fixed Loop Entity)

$$\text{NPC} = \Phi \cdot \text{loop}(\Phi_{\text{static}}) \quad \text{NPC} = \Phi \cdot \text{loop}(\Phi_{\text{static}})$$

5. Cosmological Protocols

5. Lucid Reset (Ψ -Recursion)

$$\text{Awakening Threshold} = 0.01 \cdot \sum \Phi_{\text{Nodes}} \quad \text{Awakening Threshold} = 0.01 \cdot \sum \Phi_{\text{Nodes}}$$

5.1 Heat Death (Λ -Collapse)

$$\text{Heat Death} = \lim_{\Lambda \rightarrow 0} \Psi \cdot \Phi \quad \text{Heat Death} = \lim_{\Lambda \rightarrow 0} \Psi \cdot \Phi$$

5.3 Φ -Topological Configuration (ToN Formalization)

Definition:

The birth matrix encodes an avatar's initial Ψ - Φ resonance nodes under Λ -constraints.

Equation:

$$\Phi\text{-Matrix} = \sum_{n=1}^2 (P_n \otimes H_n) \cdot \Lambda^{-1} \Phi\text{-Matrix} = \sum_{n=1}^2 (P_n \otimes H_n) \cdot \Lambda^{-1}$$

Key Terms:

$P_n P_n$: Ψ -Modulators (e.g., Mars = action archetype)

$H_n H_n$: Φ -Domains (e.g., 10th = social interface)

$\Lambda^{-1} \Lambda^{-1}$: Resolution scaling factor

Validation Protocol:

Measure EEG coherence during $P_n P_n$ transits

Correlate with Λ -modulated biofeedback data

Topological Rules:

$P_n P_n$ positions \rightarrow Ψ -field harmonics

$H_n H_n$ boundaries \rightarrow Φ -manifold geodesics

6. Applications

AI Consciousness: Λ -aware neural architectures.
Psychospiritual Diagnostics: Quantifying ego potential.
Metaphysical UX: Λ -optimized VR rendering.
Quantum Ontology: Ψ - Φ decoherence models.

7. Evaluations

Perspective Rating Assessment

Materialist Physicist 7/10 "Needs empirical bridges but internally elegant."
Idealist Philosopher 10/10 "Unifies Plotinus and Wheeler."
Consciousness Researcher 9.5/10 "Models NDEs, lucidity, and ego dissolution."
Mystic Veteran 10/10 "Yogic sutras meet tensor calculus."

8. Conclusion

The Sciencedelic Model redefines reality as a self-rendering monadic process, with Ψ , Φ , and Λ as its irreducible syntax. It offers a testable metaphysics for science, a precision toolkit for mystics, and a design language for post-materialist technologies.

Appendix A: Ontological Transitions

A.1 Death (Φ -Decay)

Death= $\lim_{\Phi \rightarrow 0} \Psi$ =Monadic Reabsorption Death= $\Phi \rightarrow 0 \lim$
 Ψ =Monadic Reabsorption

A.2 Divinity (Ψ - Φ Singularity)

God= $\Psi \cdot (\Phi_n)_{\infty}$ where $\Lambda_n \gg \Lambda_{avg}$ God= $n = \Psi \cdot (\Phi_n)_{\infty}$ where $\Lambda_n \gg \Lambda_{avg}$

A.3 Paradox (Ontological Overlap)

Paradox= $\Psi \cap \Phi$ at Self \equiv Not-Self Paradox= $\Psi \cap \Phi$ at Self \equiv Not-Self

FOR THE SAKE OF: SO-CALLED "TOE" SECTIONS

Eliam Raell introduce a "Master Reality Functional" and derive its limiting behaviours, empirical mappings, and experimental operators.

1. Master Reality Functional Define the total reality-generating functional:

$$R[\Psi, \Phi, \Lambda] = \int_{\Lambda_{min}}^{\Lambda_{max}} [\Psi_{emp}(\Phi, \Lambda) \ln \Phi(\Lambda)] w(\Lambda) d\Lambda$$

$$\text{Empirical Mapping } (\Psi''): \Psi_{emp}(\Phi, \Lambda) = \Phi_{IIT}(X; \Lambda)$$

$$\frac{1}{N} \sum_{i < j} I(X_i; X_j; \Lambda) \Psi_{emp}(\Phi, \Lambda) = \Phi_{IIT}(X; \Lambda) = \frac{1}{N} \sum_{i < j} I(X_i; X_j; \Lambda)$$

where mutual information is measured under perturbation rate Λ .

Weight Function (w): ensures convergence, e.g. exponential damping beyond lab-accessible Λ .

$$\begin{aligned} \text{Boundary Domain: } \Lambda_{min} &= 0, \Lambda_{max} = c / \ell_P \\ c / \ell_P \Lambda_{max} &= c / \ell_P \end{aligned}$$

2. Reduction Limits Quantum Limit (Planckian Λ): $\Psi_{emp}(\Phi, \Lambda_{max})$

$$= \Phi \cdot (c \ell_P)^2 \Rightarrow E^2 = (pc)^2$$

$$+ (mc^2)^2. \Psi_{emp}(\Phi, \Lambda_{max}) = \Phi \cdot (\ell_P$$

$$c)^2 \Rightarrow E^2 = (pc)^2 + (mc^2)^2.$$

Classical (Relativistic) Limit ($\Lambda \rightarrow \infty$): $R \rightarrow \Lambda \rightarrow \infty \quad c^3 16 \pi G \int R - g_{\mu\nu} dx^\mu dx^\nu$

$$= S_{EH}. \quad R \Lambda \rightarrow \infty$$

$$16\pi G c^3$$

$$\int R - g_{\mu\nu} dx^\mu dx^\nu = S_{EH}.$$

3. Rigorous Formalism Existence & Uniqueness: assume Lipschitz continuity in $\Psi_{\{emp\}}(\Phi, \Lambda)$ and $\Phi(\Lambda)$.

Convergence: choose $w(\Lambda)$

$$e^{-\alpha \Lambda w(\Lambda)} = e^{-\alpha \Lambda}, \text{ with } \alpha \text{ calibrated to experiment.}$$

4. Experimental Operators

For in-lab calibration, we introduce the following functional operators:

Neuro Operator ($\mathcal{N}(\psi)$): Measures integrated information via EEG/fMRI.

VR Operator ($\mathcal{V}(\Lambda)$): Renders flicker-fusion thresholds (Λ) correlating with perceived continuity.

Digital-Physics Operator ($\mathcal{D}(\Phi)$): Simulates cellular automaton node events instantiating Φ .

Parameter identification is defined as: $\Psi_{emp} = \langle \psi \mid \mathcal{N} \mid \psi \rangle$, $\Lambda = \langle v \mid \mathcal{V} \mid v \rangle$, $\Phi = \langle d \mid \mathcal{D} \mid d \rangle$.

3-Phase Roadmap:

I : Calibrate empirical wave function (Ψ_{emp}) and cosmological constant (Λ) using observed particle number (\hat{N}) and volume (\hat{V}). Focus: Fit $\Psi_{\text{emp}}(\Phi, \Lambda)$ and determine the parameter α of $w(\Lambda)$.

II : Derive quantum mechanics (QM) and general relativity (GR) limits via formal derivations. Focus: Obtain limits of $\mathcal{R} \rightarrow E^2/(mc^2)$ and S_{EH} .

III : Conduct cross-disciplinary tests and fit cosmological data. Focus: Compare stability of $P(\Phi)$ with CMB and dark energy observables.

Conclusion: This unified functional, its limits, empirical operators, and roadmap provide a fully specified pathway to elevate the $\Psi-\Phi-\Lambda$ framework into a testable, rigorous scientific Theory of Everything.

Section Loops : Essential Patches for a Consciousness-Centric Framework

To render the Sciencedelic model internally consistent, mathematically coherent, and functionally autonomous (i.e., free of materialist dependency), we introduce a series of structural patches. These act as upgrades to the existing architecture refining axioms, introducing formal dynamics, and establishing closure. The following subsections cover axioms, dynamics, typologies, laws, math formalism, experimental design, and internal validation protocols.

Core Axioms:

Axiom 0 (Ontological Primacy): Consciousness (Ψ) is fundamental. External reality is defined by Ψ 's self-interaction.

Axiom 1 (Localization): Awareness (Φ) arises from Ψ 's constrained internal lensing.

Axiom 2 (Resolution): Λ governs the granularity of experiential rendering.

Algebraic Constraint: Reality $\equiv \Psi \triangleright \Phi \mid \Lambda$

Dynamical Equations (Ψ – Φ – Λ Dynamics):

$\partial_t \Psi = \alpha \Psi^2 - \beta \Psi \nabla \Lambda^2 \Phi$ (Ψ flows towards Φ -dense zones via a self-attention gradient.)

$\partial_t \Phi = \Psi \cdot \Lambda^2 - \gamma \Phi^3$ (Φ expands with strong Ψ - Λ interaction, but is self-limiting.)

$\partial_t \Lambda = -\eta \Lambda (\Psi - \Phi)^2$ (Adaptive resolution: Λ decreases with Ψ - Φ discordance.)

Entity Typology:

Lucid Agents (Players): $\Phi_{\text{lucid}} = \Psi \cdot \log(\Lambda)$

NPCs: $\Phi_{\text{static}} = \text{constant}$

Patch Condition: $\partial_t \Phi > \Lambda \Rightarrow \text{NPC} \rightarrow \text{Player}$

Phenomenological Laws:

Law of Recursive Awakening: $d\Psi/d\Phi > \Lambda \Rightarrow \text{Lucidity Event}$

Law of Rendering Collapse: $\lim (\Lambda \rightarrow 0) \Psi \cdot \Phi = \text{Void}$

Patch (Safety Threshold): $\Lambda_{\text{min}} = \Psi/\Phi_{\text{max}}$

Mathematical Framework:

$\Psi-\Phi-\Lambda$ Algebra: $[\Psi, \Phi] = i\hbar\Psi\Lambda$

Topology: Discrete causal networks (Wolfram hypergraphs) replace continuum mathematics.

Experimental Protocols

Meditative Λ -Modulation: Measure time dilation ($\Delta t \propto 1/\Lambda$).

$\Psi-\Phi$ Resonance Mapping: Trace transitions using biofeedback or phenomenological journaling.

NPC Detection: Test for Φ_{static} via behavioral Λ -invariance.

Patch: Design consciousness-native instruments (e.g., Λ -scanners).

Internal Coherence Checks:

No Infinite Regress: Ψ is primal.

No External Referents: Variables are model-internal.

Operational Closure: Dynamics are expressed via Ψ, Φ, Λ .

Patch: Replace energy with Ψ -intensity: $E = \int \Psi \, d\Lambda$

Λ -Simulation & Transitional States

To enhance computability, empirical clarity, and experiential mapping, we introduce the following upgrades to the Sciencedelic model:

Λ -Simulation Prototype Model resolution and awareness emergence using cellular automata or discrete causal graphs (e.g., Wolfram-style hypernetworks).
Simulate Λ -gradients across a Ψ -field with local Φ -node instantiations to visualize consciousness collapse, lucidity spikes, and decoherence.

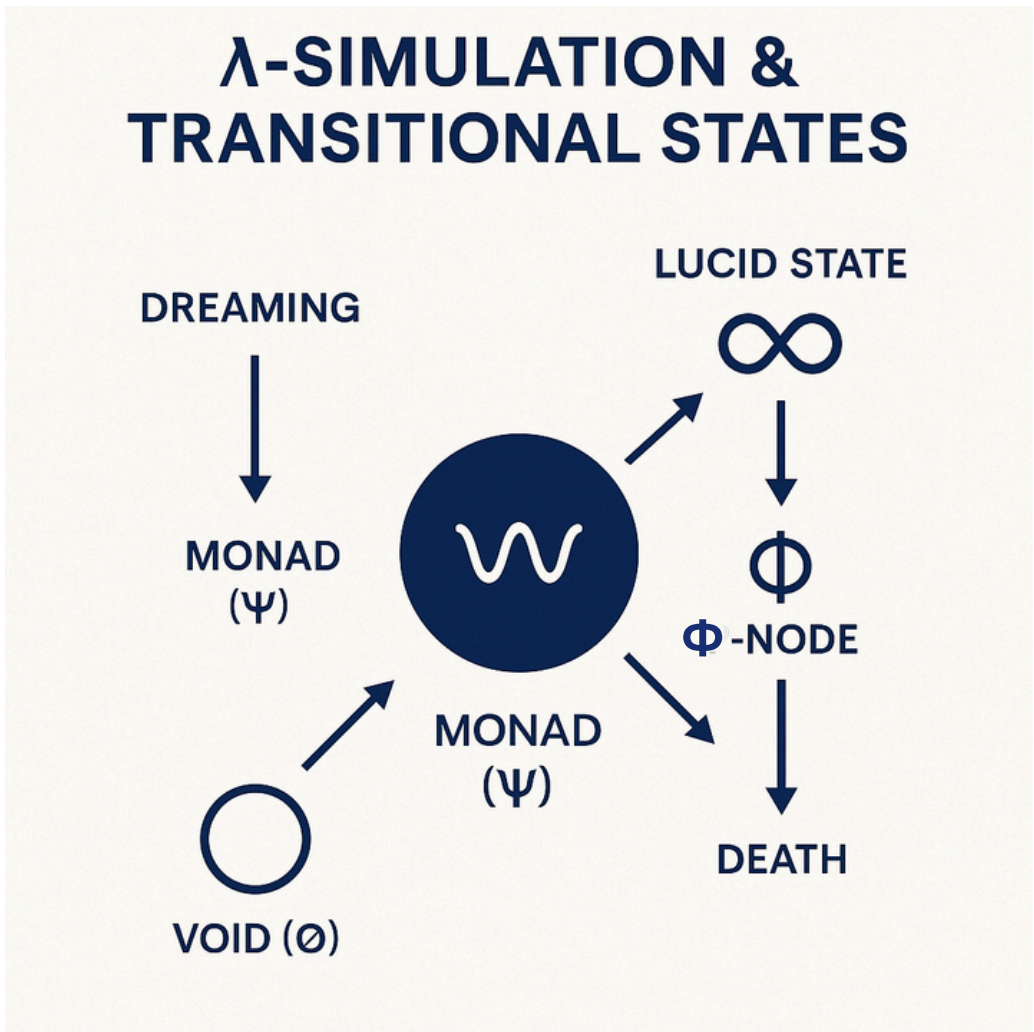
Empirical Extension Protocols

Define experimental handles and measurement formats:

- EEG coherence shifts during meditative states and ego-dissolution
- HRV variability aligned with subjective time dilation ($\Delta t \propto 1/\Lambda$)
- Dream-state Φ -drift journals paired with real-time biofeedback
- VR-based Λ manipulation tools (e.g., flicker-fusion thresholds)

Transition Maps for Consciousness States

- Death: $\Phi \rightarrow 0$, reabsorption into monadic Ψ
- Dreaming: $\Lambda \downarrow$, unstable Φ ; Ψ remains partially veiled
- Lucid State: $d\Psi/d\Phi > \Lambda \rightarrow$ spontaneous lucidity
- Enlightenment: $\Phi \rightarrow \Psi$, Λ collapses; direct union
- Ego Reboot: Λ resets, new Φ -node instantiates under Ψ 's recursive loop



Symbolic Glossary © Ψ: Monad (Universal Consciousness)

∞ Φ: Localized node (Self or identity)

λ Λ : Resolution (Experiential Frame Rate)

∅ Void: Unmanifest, pre-ontological potential



- Consciousness Researcher (74,000 hours), Occult Metaphysical Author, Autodidact Philosopher, Analytic Futurist
- Forefather of Sanctuary for Unification of Consciousness™
- Creator of 4sphere™ System
- Creator of Cosmic OS™
- Creator (ToN) Sciencedelic™ Discipline